

JACQUES POWER OVER ETHERNET ADAPTORS

Description

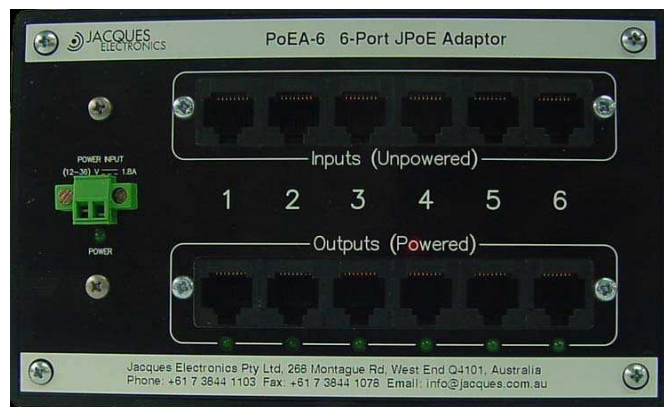
Jacques Power over Ethernet Adaptors are passive devices that add power to an Ethernet Cable for equipment that is PoE enabled. Power over Ethernet simplifies installation and eliminates the need to run separate power cables and LAN cables to each Access Point or port location. Whether on a factory floor or in a secure facility Jacques Power over Ethernet solutions significantly reduce cabling and outlet requirements while providing the lowest total cost of ownership.



PoEA-1 single port model

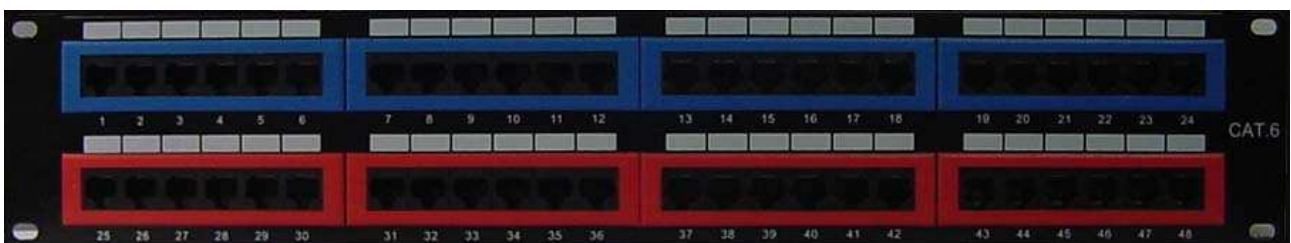
Features

- Eliminates power feed cabling
- Provides one central secure location for power
- Resettable safety fuse for each port
- Diagnostic power indicator for each port
- Remote power feeding of up to 100m from Ethernet Switch to PoE device
- Standard RJ45 Sockets
- Vibration proof input power connector

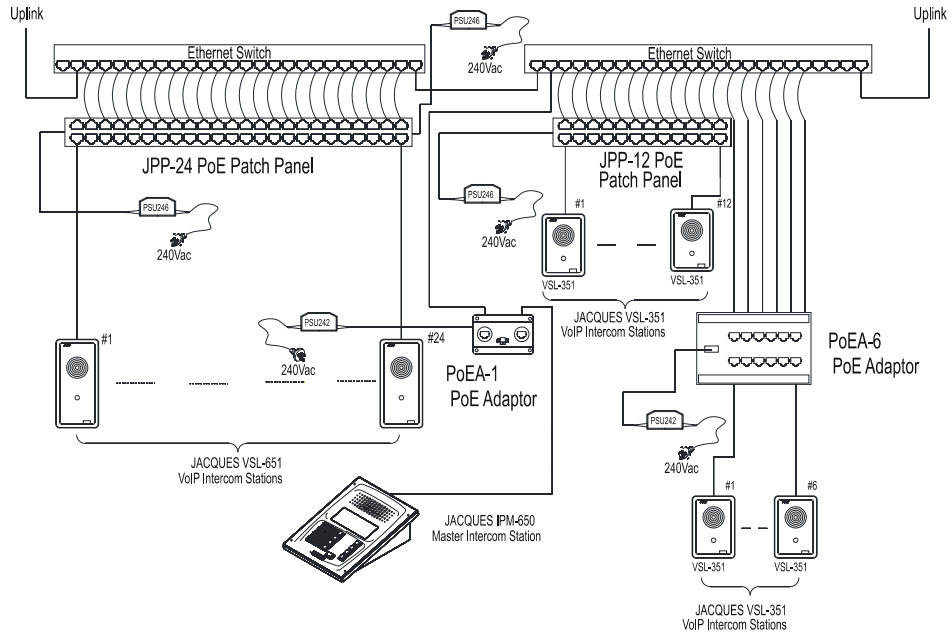


PoEA-6 six port model

JPP-24 24 port 2RU model



Block Diagram



Specifications

Specification	Description
Patch connectors	Ethernet RJ45 T568B standard
Dimensions (mm)	82W x 54H x 30D (PoEA-1), 155W x 95H x 50D (PoEA-6), 19" 2U (JPP-12, JPP-24)
Power connector	PoEA-1, PoEA-6 models – removable screw terminal with locking screws JPP-12, JPP-24 models – removable screw terminal
Maximum feed length	100 m from switch to device
Output current per port	300 mA continuous
Protection feature (each port)	Polyswitch type, resettable 0.3 A, reverse polarity
EMI Feature (each port)	Common mode, CLC filter
Indicators	Green, indicate power online status

Ordering Information

Part Number	Description
50997	PoEA-1, single port PoE adapter
50961	PoEA-6, Six port PoE adapter
51059	JPP-12, 12 port 2RU ½ wide PoE patch panel
50925	JPP-24, 24 port 2RU PoE patch panel
50971	PSU-242 24 V d.c., 2.5 Amp plug pack (suits PoEA-1 and (PoEA-6 models)
50709	PSU-246 24 V d.c., 6 Amp plug pack (suits JPP-12 and JPP-24 models)
CA162	Ethernet patch lead, 1 metre, blue colour
CA163	Ethernet patch lead, 2 metre, blue colour
CA164	Ethernet patch lead, 2 metre, red colour
CA174	Ethernet patch lead, 30 cm, blue colour
CA175	Ethernet patch lead, 22 cm, black colour

Rev 27/07/06